
FARMING WITH NATIVE BIODIVERSITY: A roadmap towards systems change

Healthy ecosystems with high biodiversity have been recognised as essential for sustainable farming and it has been proven that supporting native biodiversity can lead to improved farm production.

The Farming with Native Biodiversity pilot worked with farmers, catchment groups, councils, and other stakeholders to improve knowledge of native biodiversity, and develop the capacity to implement practices on farm.

With farmers and land managers still preferring face-to-face interactions to gain information as opposed to being sent a document to read, there needs to be an increase in the number of ecologists and other ecology savvy specialists, spread across the country to fill this service.

Through this project, we have developed resources to upskill farm advisors on how to manage biodiversity on farms. It is expected that advisors who have gone through these resources will be better able to provide recommendations on actions to manage biodiversity on farms.

Ecologists and advisors, trained to collaborate with farmers and tāngata whenua, need to be able to advise on how native biodiversity can be managed in a modified environment while being mindful of the impacts management options will have on the farming business, and vice versa.

We hope this roadmap will guide a range of user groups in how they can access and incorporate these resources that were developed for public benefit into their strategies and operations.

FARMING WITH NATIVE BIODIVERSITY TIES IN WITH EXISTING NATIONAL PROGRAMMES & STRATEGIES

The **Farming with Native Biodiversity suite of resources** complement existing private sector programmes and strategies.

Roadmap for Environmental NGOs, Researchers & Academia

The Farming with Native Biodiversity project has collated a wide range of resources that were developed by organisations working in this space; and produced complementary new resources to support researchers and organisations working in the environmental field actively improve the outcomes of native biodiversity with pastoral farm systems.

The information is designed to be shared and can be customised and re-skinned for your organisation's purposes. Click on the links below to access these resources.

HOW YOU CAN USE THE RESOURCES

TRAINING:

- **E-learning modules:** nine 15-20 minute modules designed to introduce farmers to the concepts behind farming with native biodiversity. The modules mix up videos from experts with quizzes, examples and key facts.
- **Workshop Session Toolkit:** Includes a guide agenda, activities, presentation, and facilitator notes.

GUIDANCE:

- Example Biodiversity management action plans for sheep and beef farms.
- Farming with Native Biodiversity Kete.
- Monitoring biodiversity guides.
- Restoration planting.
- Importance of farms in protecting New Zealand's lowland forests.

PLANTING:

- Hear from the experts.
- Top tips for native planting.
- Plant selection information sheets and podcasts.

PEST MANAGEMENT:

- Information sheets, podcasts, and videos on predator control and pest identification.

RESEARCH:

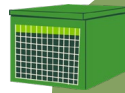
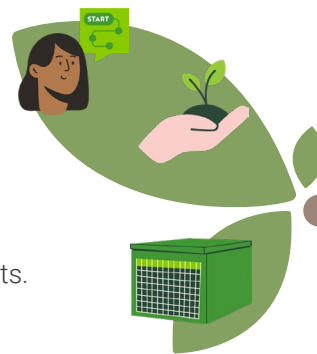
- Project reports.
- Planning feedback.

NEWSLETTER CONTENT:

- Tips and information to integrate into industry newsletters and updates on biodiversity on farm.

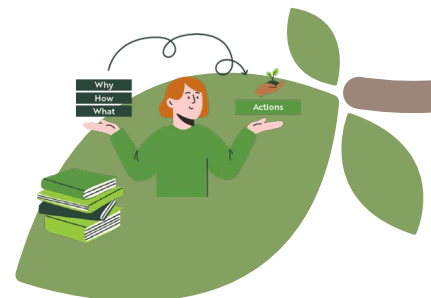
READ, LISTEN, WATCH & LEARN:

- The Farming with Native Biodiversity Resources Collection is a repository of information sheets, presentations, podcasts, videos, apps created by the project, national and international environmental organisations, and research institutes including the Farming with Native Biodiversity project team, NZ Landcare Trust, and more.



KNOWLEDGE SHARING:

- Information sheets
- Videos
- Webinars
- Podcasts



Check out the **Resources Collection** on Farming with Native Biodiversity's website.

Customise the resources to suit your ways of working

Share with your members, students and other researchers

Incorporate the resources into your communications, training and courses